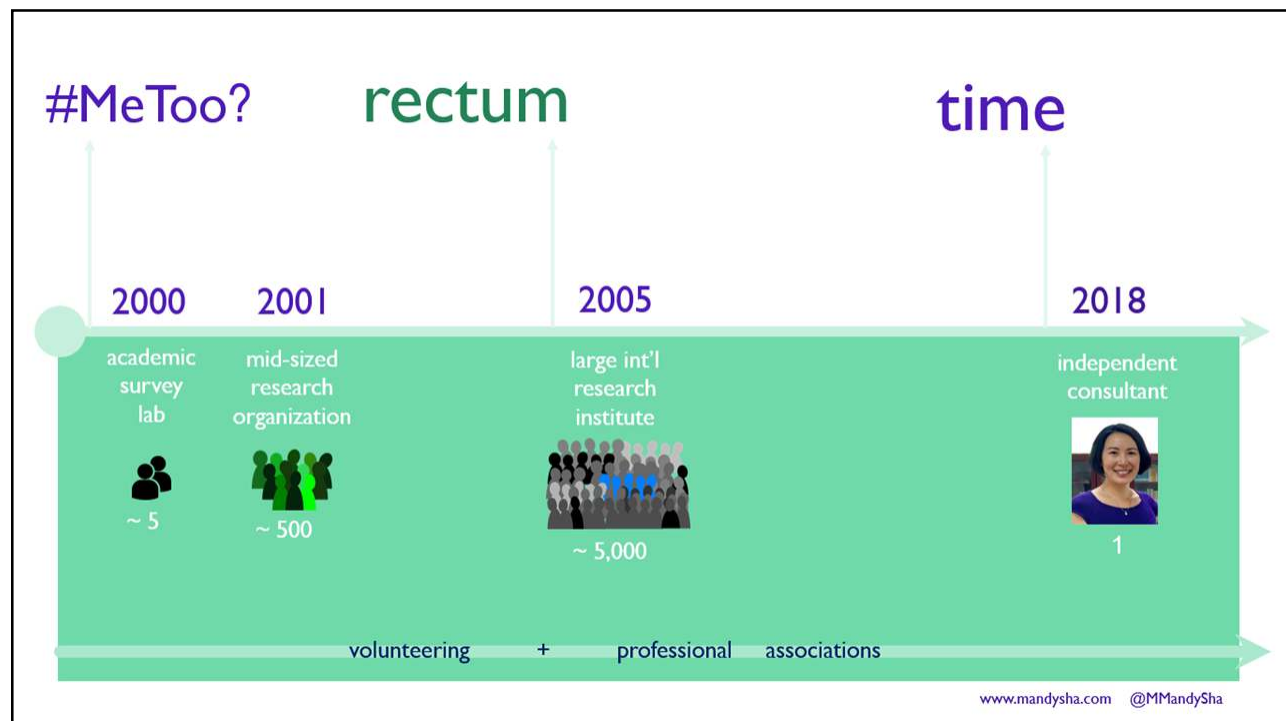



Reflections on Career Transitions in the World of Survey Research

Claudia Deane, Matt Jans, Mandy Sha


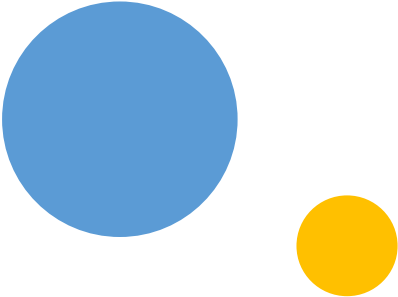
Thursday, October 10, 2019
12:00 Noon Central Time





Significant decisions throughout your careers


Looking back, what were some of the more influential decisions you made in your career?

Significant decisions throughout your careers

What types of risks did you take that resulted in rewarding experiences and outcomes?

Are there things you would have done differently or things you would most definitely do the same?






Do you have questions
for the presenters?

Please send us your questions
via the chat section.



Working in different sectors

What were some of the significant differences between working in the public, private, or academic sectors that surprised you during your transitions?



Working in different sectors

Are there any stereotypes or myths about certain sectors you feel should be disproven?

Are there unique career opportunities found within specific sectors?

Mentors and networks

What experiences have you had with mentors?

How have you gone about getting a mentor?

Do you have any advice or stories about how to choose or not choose a mentor?



Photo Courtesy of Shutterstock



Mentors and networks

How have you built your network over the years?

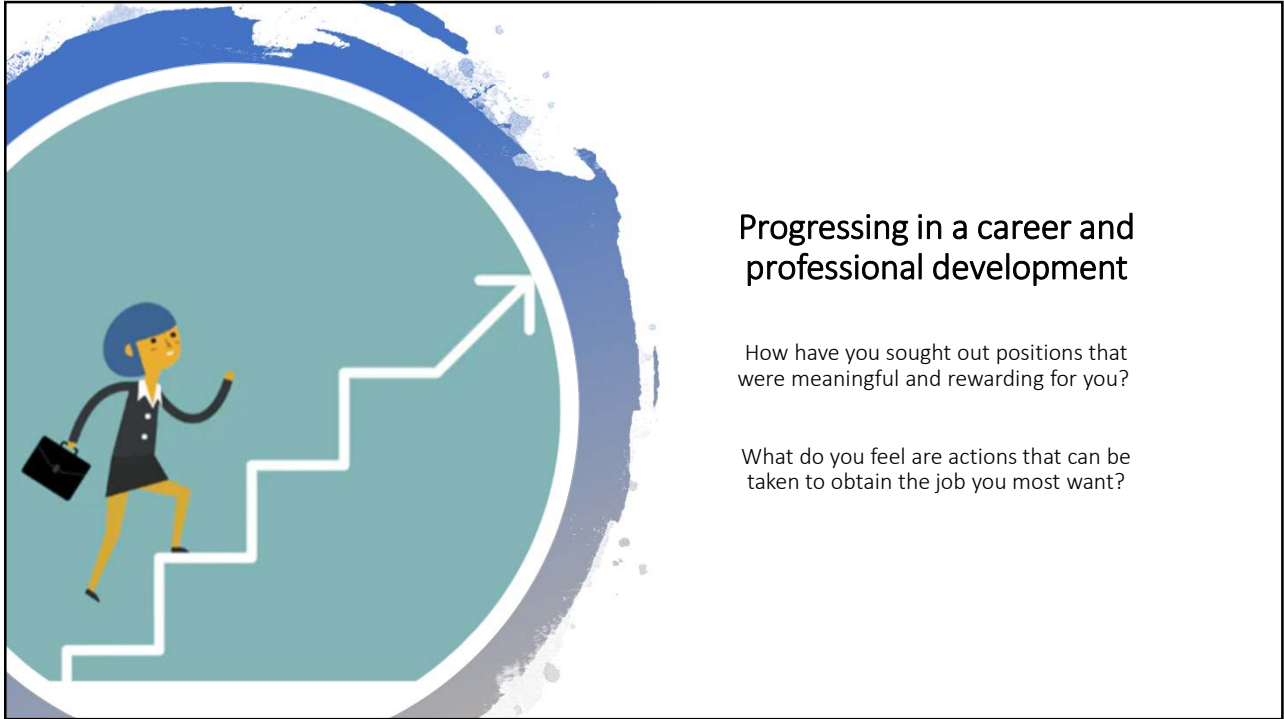
Do you have examples of when you were able to capitalize on your networks?



Progressing in a career and professional development

What advise do you have on being promoted or progressing within your institution?

How can workers find professional development opportunities within their current jobs?



Progressing in a career and professional development

How have you sought out positions that were meaningful and rewarding for you?

What do you feel are actions that can be taken to obtain the job you most want?

Image credits

- <https://www.newharbinger.com/blog/how-help-clients-who-have-difficulty-making-decisions-increasing-tolerance-uncertainty>
- <https://waitbutwhy.com/2018/04/picking-career.html>
- <https://waitbutwhy.com/2018/04/picking-career.html>
- <https://catholicinsight.com/public-versus-the-private-sector/>
- <https://www.appsruntheworld.com/government-market-report-2009-2014/>
- <https://www.businessinsider.com/coolest-college-libraries-2014-4#boston-college--bapst-library-3>
- <https://www.success.com/how-to-excel-as-a-mentor-or-mentee/>
- <https://medium.com/swlh/whats-the-difference-between-a-mentor-an-advisor-and-a-coach-b72165bba983>
- <https://www.seek.com.au/career-advice/most-common-career-progression-questions-answered>
- <https://www.marketingweek.com/salary-survey-2018-gender-pay-gap/>





Contact us:

Claudia Dean

CDeane@pewresearch.org

Matt Jans

matt.jans@gmail.com

Mandy Sha

mandy@mandysha.com